

ORION **DISPLAY** BROCHURE

MLCD



Video Wall Display

OLMR, OLME, OLMU_Bezel to Bezel

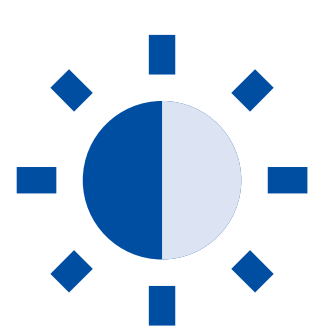
Orion video wall creates natural appearing full screen over multiple configuration of LCD panels with its extremely narrow bezel gap. This creates a powerful video wall minimizing the visual distraction and more continuous image spreads across multiple displays.

PRODUCT FEATURES



1. Authentic commercial panel

- 100% IPS industrial grade screen
- 24/7 guarantee



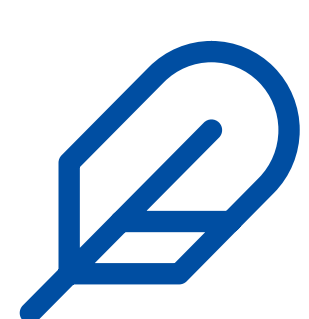
2. Auto white balance

- 20 seconds enough for 1 panel's calibration
- Panel's white uniformity ensures more than 90%



3. Auto Sync in MLCD

- Fully processed by Orion board's solution reducing visual distortion in fast moving video

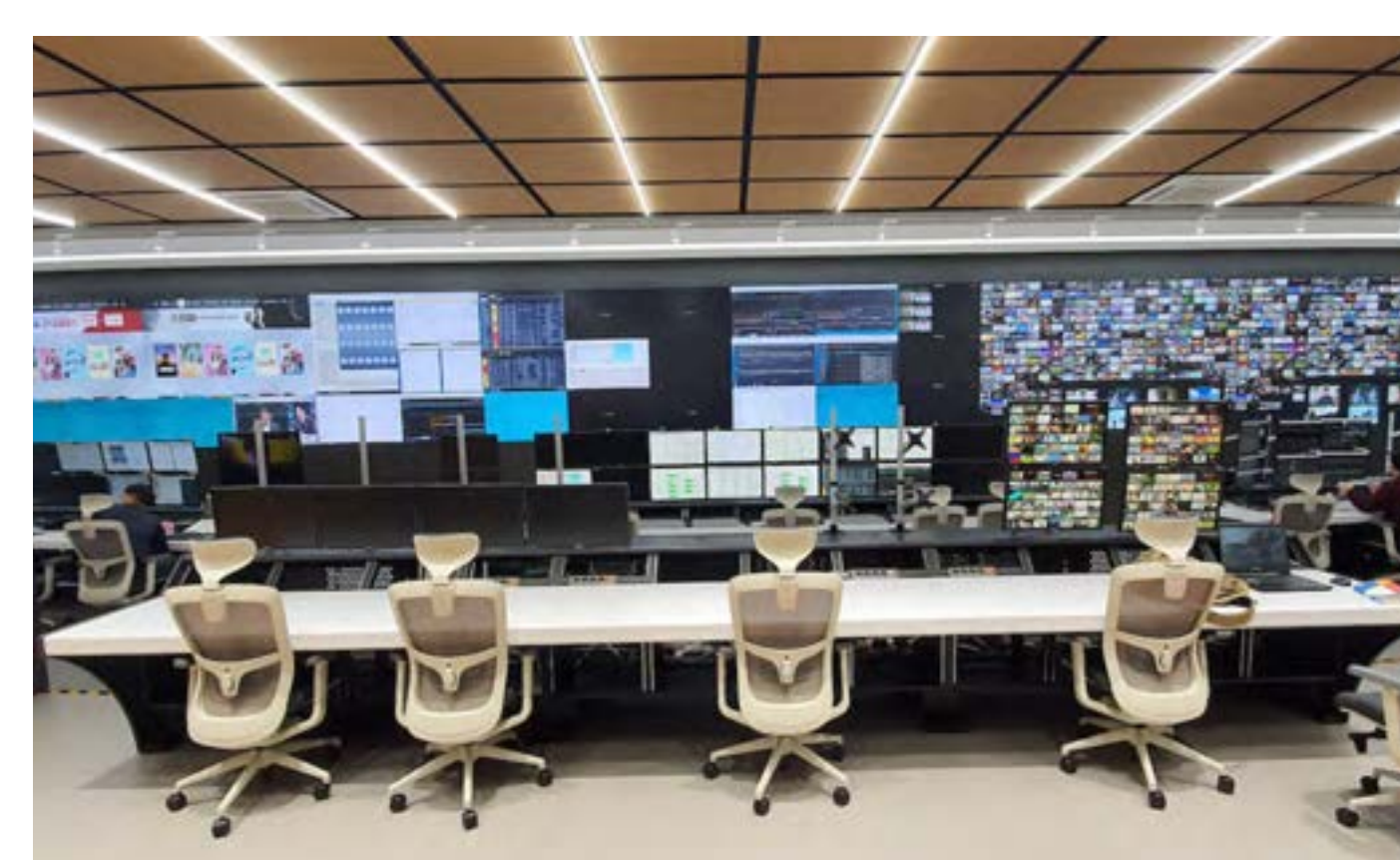
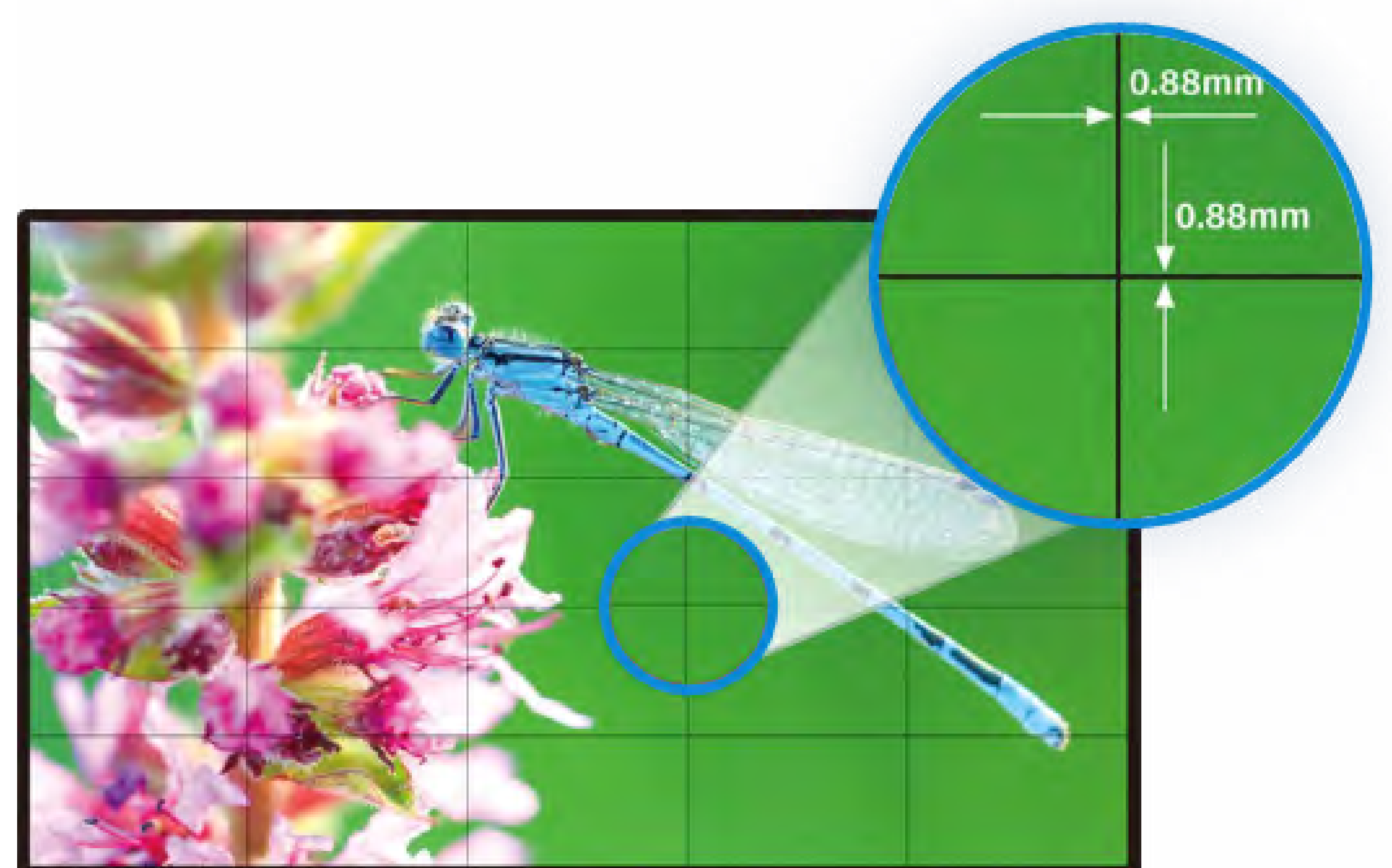


4. Lighter is better *(option)

- 17kg MLCD weight upgrade chassis are ready
- Easy for installation and maintenance

ORION
Display

INFORMATION



Corporate control room

SIZE | 55" RNB(0.88mm) 18 X 3



Government control room

SIZE | 55" RNB(0.88mm) 15 X 2

General Information

Model Name			OLMR		OLME	
			K5550	K5570	5552S	K5552
LCD PANEL	Screen Size		55"			
	Bezel Width [mm]		0.88		1.8	
	Active Display Area (H x V) [mm]		1,209.34 x 680.34		1,209.6 x 680.4	
	Aspect Ratio		16:9			
	Viewing Angle (H / V) [°]		178 / 178			
	Resolution (H x V)		1920 x 1080			
	Brightness [cd/m²]		500	700	500	
	Contrast Ratio		1,100:1		1,400:1	
	(Dynamic CR)		(30,000:1)			
	Color Depth		1.07B (10bit)			
	Surface Treatment (Haze)		28% (AG, 2H)		3% (AG, 2H)	
	Life Time (Back Light Unit) [Hrs]		60,000			
Power	Power Supply		AC100-240V~, 50/60Hz			
	Power Consumption	Stand-By [W]	≤ 0.5			
		Typ. [W]	145	215	215	180
		Max. [W]	155	250	250	200
Mechanical	Dimension (H x V x D) [mm]		1,210.51 x 681.22 x 88.9		1,211.4 x 682.2 x 88.6	
	Weight (kg)		24 (17)		25.3	
	VESA Mount [mm]		600 x 400, M5			
Connectivity	Input	Video	DP, HDMI, DVI		DP, x2 HDMI, DVI, PC	DP, HDMI, DVI
		Control	LAN, RS-232C, IR, A/S Port		LAN, RS-232C, IR	LAN, RS-232C, IR, A/S Port
	Output (Daisy-Chain)	Video	DP		DVI	DP
		Control	RS-232C			

Model Name			OLMU			
			K4953	5552S	K5552	K5553
LCD PANEL	Screen Size		49"	55"		
	Bezel Width [mm]		3.5			
	Active Display Area (H x V) [mm]		1,073.8 x 604.0	1,073.8 x 604.0		
	Aspect Ratio		16:9			
	Viewing Angle (H / V) [°]		178 / 178			
	Resolution (H x V)		1920 x 1080			
	Brightness [cd/m²]		500			
	Contrast Ratio		1,100:1	1,200:1		
	(Dynamic CR)		(7,000:1)			
	Color Depth		1.07B (10bit)			
	Surface Treatment (Haze)		3% (AG, 2H)		28% (AG, 2H)	
	Life Time (Back Light Unit) [Hrs]		60,000			
Power	Power Supply		AC100-240V~, 50/60Hz			
	Power Consumption	Stand-By [W]	≤ 0.5			
		Typ. [W]	145	215	215	180
		Max. [W]	155	250	250	200
Mechanical	Dimension (H x V x D) [mm]		1,077 x 607.8 x 90.4	1,213.4 x 684.2 x 95.2		1,213.4 x 684.2 x 94.2
	Weight (kg)		24	27.5		26.5
	VESA Mount [mm]		600 x 400, M5			
Connectivity	Input	Video	DP, HDMI, DVI	DP, x2 HDMI, DVI, PC	DP, HDMI, DVI	
		Control	LAN, RS-232C, IR, A/S Port	LAN, RS-232C, IR	LAN, RS-232C, IR, A/S Port	
	Output (Daisy-Chain)	Video	DP	DVI	DP	
		Control	RS-232C			

Hybrid Wall

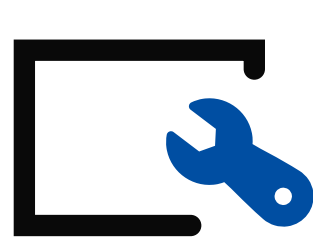


Special Video Wall display

Hybrid Display Video Wall

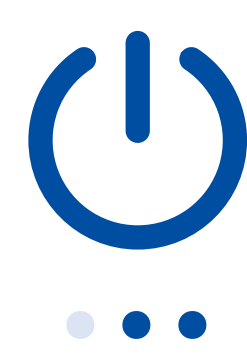
Orion's unique off-board electronic design makes it possible that any system failure can be easily accessible, reducing time and heat. Redundant power supply means providing you continuous operation in the event of power failure.

PRODUCT FEATURES



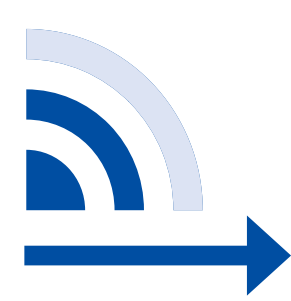
1. Orion off board solution

- SMPS and IP boards are off from wall screen
- Easy for maintenance, quick response



2. Redundant power supply

- High reliability for 24/7 operation
- Ideal for control room application



3. Cat5/e communication

- More than 100 meters distance controllable
- High advantage for technical access to system

INFORMATION



LCD Module (2x2)



IMAGE PROCESSING
MODULE

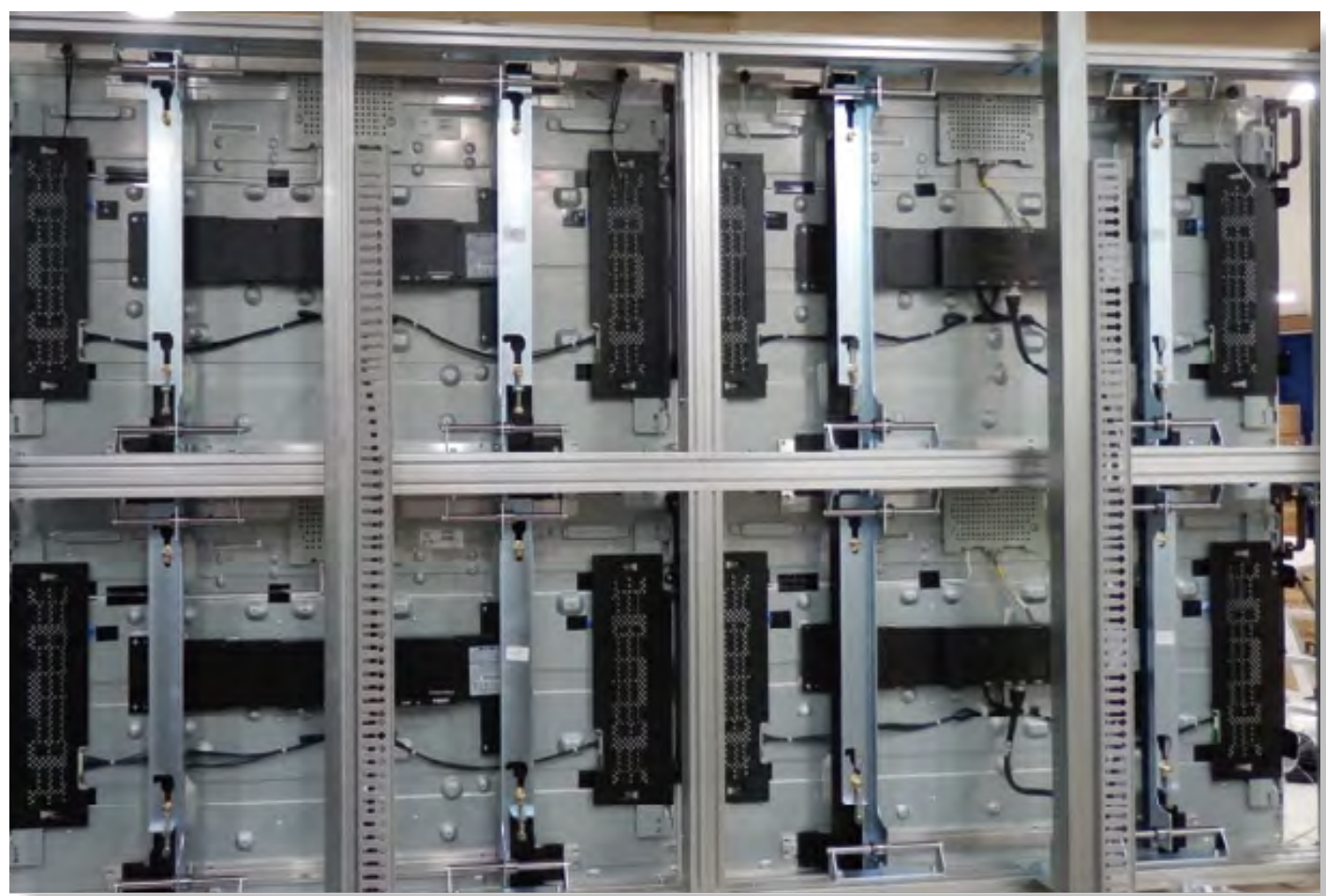


POWER SUPPLY
MODULE



Corporate control room

SIZE: 55" UNB(3.5mm)



Rear view

SIZE: 55" UNB(3.5mm)



General Information

Model Name			OLWU-5520	OLWU-5550	OLWE-5550	OLWE-5570
Seam Gap			3.5mm		1.8mm	
LCD Module with Receiver	Backlight Type		55” LED LCD			
	Resolution (H x V)		1920 × 1080			
	Brightness [cd/m²]		500	700	500	700
	Contrast Ratio		1,400 : 1		1,200 : 1	
	Power Consumption (Max) [W]		200	270	200	270
	Acoustic Noise		Fanless Operation			
	Receiver	Video Input	RJ45 (From Image Processor)			
		Control Input				
		Power Input	DC 24V / 10.5A (From Power Supply)			
Image Processor Module	Maximum image Scaling		Connecting up to 36 Panels with 9 Image Processor			
	Video Input		4*DVI (With HDCP), 1 *Loop In			
	Video Output		4*RJ45 (To Receiver), 1 *Loop Out (DVI)			
	Control			RS-232 In / Out (RJ45)		
				Ethernet (RJ45)		
				4*LCD Panel Control (RJ45)		
				Power Supply Control (RJ45)		
	Distance From Panel		15m(Standrad), 30m/40m(Option)			
	Power Input		DC 24V / 5A			
	Case		19" Rack, 1U			
	ETC		Status Display (LED, C-LCD), Rotary Switch			
Power Module	AC Input		AC 100 - 240V± 10%, 50/60Hz			
	DC Output		4*DC 24V/10.5A (For Receiver) DC 24V / 5A (For Image Processor)			
	Control		RJ45 (From Image Processor)			
	Maximum Distance From LCD		15m(Standrad), 30m/40m (Option)			
	Status Display		LED			
	Case		19" Rack, 2U			

IR touch Monitor

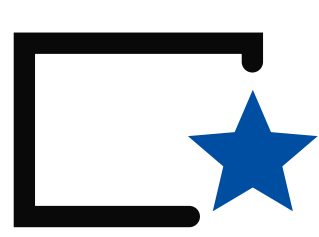


IR Touch Monitor

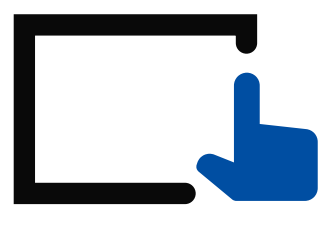
OLSK Series

Orion slim touch monitor offers you seamless indulging experience with interior design attributing to ultra slim touch frame chassis as well as variety of screen size, Orion line up will satisfy customer’s demand.

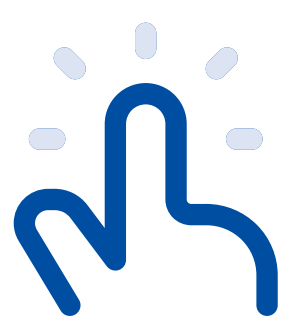
PRODUCT FEATURES



- 1. Commercial Grade Panel**
- Industrial use 24/7
 - Optimal brightness for indoor application



- 2. Slim Touch Frame**
- Light weight
 - Seamless blending



- 3. High accuracy**
- 20 points touch screen
 - Vivid touch response and high accuracy

INFORMATION



Education private
SIZE | 55” UHD Stand



Retail shop display
SIZE | 86” UHD Wall mount



General Information

Model Name		OLSK				
		5540AS	6540AS	7540AS	8640AS	9840AS
Display	Size	55"	65"	75"	86"	98"
	Display Dimension (W)×(H)x(D)mm	1253.4×725.3x62.7	1482.7×857.5x91.8	1704.6×985.2x91.8	1950.8×1124.3x91.8	2215.2×1277.9x95.7
	Display Area (W)×(H)mm	1207.6x678.4	1428.0x803.0	1649.0x927.1	1895.0x1066.1	2158.8x1214.4
	Resolution	3840 x 2160 UHD				
	Viewing Angle	178°(H) / 178°(V)				
	Brightness	400 cd/m²				
	Contrast	3500:1				4000:1
	Aspect Ratio	16:9				
	Display Colors	16.7 M				10bit, 1.07B
	Response Time	6 ms				
	Lifespan	50,000 - 60,000 hour				
Touch	Method	Infrared Ray				
	Touch Point	20 Point				
	Touch Object	Finger, Pen, Object				
Speaker	frequency	8 Ω				
	Frequency	80 - 18K Hz				
	Output SPL	88 ± 3 dB				
	Max,Power Output	5 W × 2				10 W × 2
Player	Media player	None				
Network	Network Access	None				
Interface	Internal Interface	HDMI-in, VGA-in, AV-inx1USBx1, Touch USBx1, Earphone				HDMI-in, VGA-in, AV-inx1, Touch USBx1, StereoJack
	External Interface	HDMI-in, USB for touch, Power, Switch				
	Option	OPS PC (Open Pluggable Specification)				
Power	Power Supply	100-240V/AC, 50-60 Hz				
	Max consumption	150W	300W	350W	580W	
Enclosure	Shell material	Aluminum profile and metal plate				
	Color	Powder coating color black				
	Glass	Tempered safety glass thickness 4mm				
	Mounting bracket	400*400	800*400			1000*400
	Customized logo	optional				
Environment	Operating Temperature	0°C - +40°C				
	Working Humidity	10% - 80% RH				
	Storage Temperature	-20°C - +60°C				
	Storage Humidity	No condensation				

Wall Controller

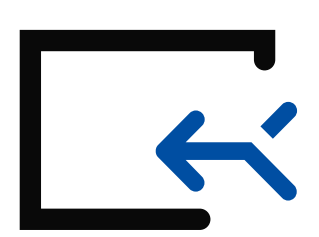


Wall controller

ORVW Series

Orion's brand new video wall controller, ORVW series is professional image processing product based on 6.25G processing chip performing fast speed, professional video wall control, IP-Video decoding and various I/O interface supporting 4K resolution with long term reliability.

PRODUCT FEATURES



1. Affluent input & output signal

- HDMI, DVI, VGA and SDI input & output cards
- Hot swappable cards slot solution
- Quad / Dual channel port customization



2. Various chassis supports by customer's demand

- 4U, 8U, 16U A/B and 32U
- Ideal for small to middle scale control room



3. Optimized with Orion MLCD

- Same manufacturer, same solution
- One stop solution for professional display proposal

ORION
Display

INFORMATION



Corporate control room



Corporate control room

General Information

Device Size	4U		8U		16U		16UA		16UB		28U		32U(Double)	
Port	Input	Output	Input	Output	Input	Output	Input	Output	Input	Output	Input	Output	Input	Output
Slots	4	4	9	8	20	20	29	15	15	29	40	40	80	80
Redundant PSU	1+1		1+1		2+2		2+2		2+2		2+2		4+4	

HARDWARE	System Sturcture	Pure Hardware FPGA Architecture
	Processing Technology	FPGA real-time processing technology
	Operating System	No CPU Operating System
	Card Type	Pure Hardware Pluggable, Hot-Swappable Structure
	Power supply configuration	N+1 Reduundant Power Supply Structure
INPUT OUTPUT SIGNAL	Input Type	VGA,DVI,HDMI,DP,CVBS,SDI,HDBaseT,IP-Video,Fiber
	Input Channel	1080P up to 320 channel,4K up to 80 channel
	Output type	VGA,DVI,HDMI,CVBS,SDI,HDBaseT,Fiber
	Output Channel	1080P up to 320 channel,4K up to 80 channel
IMAGE PROCESSING	Display mode	Roaming, Overlay, Zoom in/out, Multi-Windowing, Scene Wwitch, PIP, Full Screen and Combination Screen
	Max input /output resolution	3840*2160@60Hz / 3840*2160@30Hz
	Single-screen window	At least 8 Windows on each two screens
	Number of Signal Copy	≥8
	Hot-swappable	Support
	Preview / Echo	Support
	Scene/Signal Switching Time	Millisecond-level switching
CONTROL	Network Control	TCP/IP(RJ45)
	Serial Port Control	RS232 (DB9)
	Third Party Control	Infrared Remote Control, Serial Port, Keyboard, Network, Central Control, Mobile Terminal
POWER SUPPLY		100-240VAC ±10% 50/60Hz
CONTROL	Safety	No virus & crash
	MTBF	>50000H
	Continuity	24 / 7
WORKING ENVIRONMENT	Temperature	-15-60℃
	Humidity	10-90%without condensation

LED Signage

LED Signage

Orion Fine Pitch LED

Ultrathin - the panel is only 76mm in thickness to save installation space Heat Dissipation of the Metal, Noiseless, Low Power Consumption & Ultra-long working hours.

PRODUCT FEATURES



1. Fine pitch LED

- Vivid image quality of fine pitch LED screen
- High durability for extended operation time



2. Full color RGB support

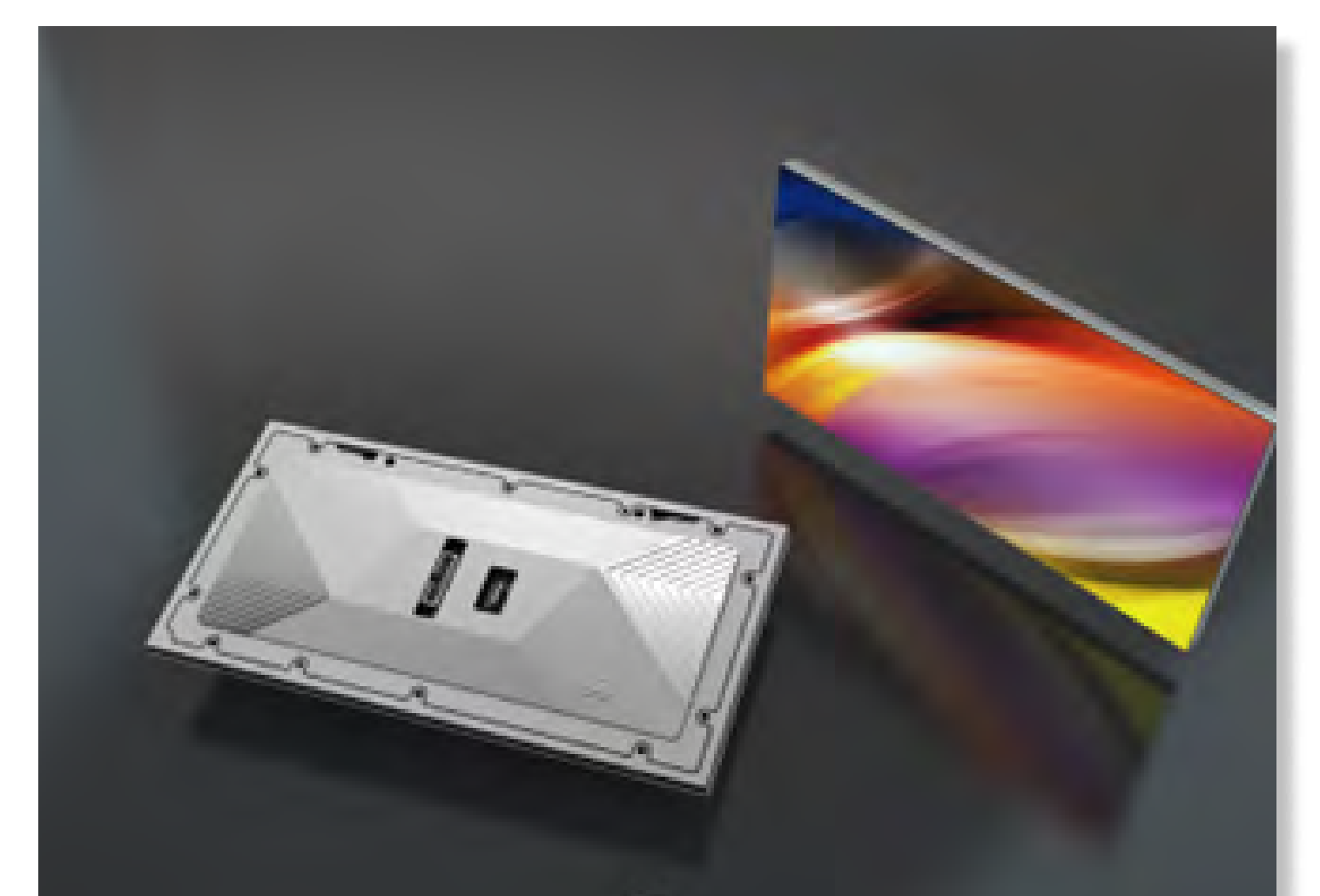
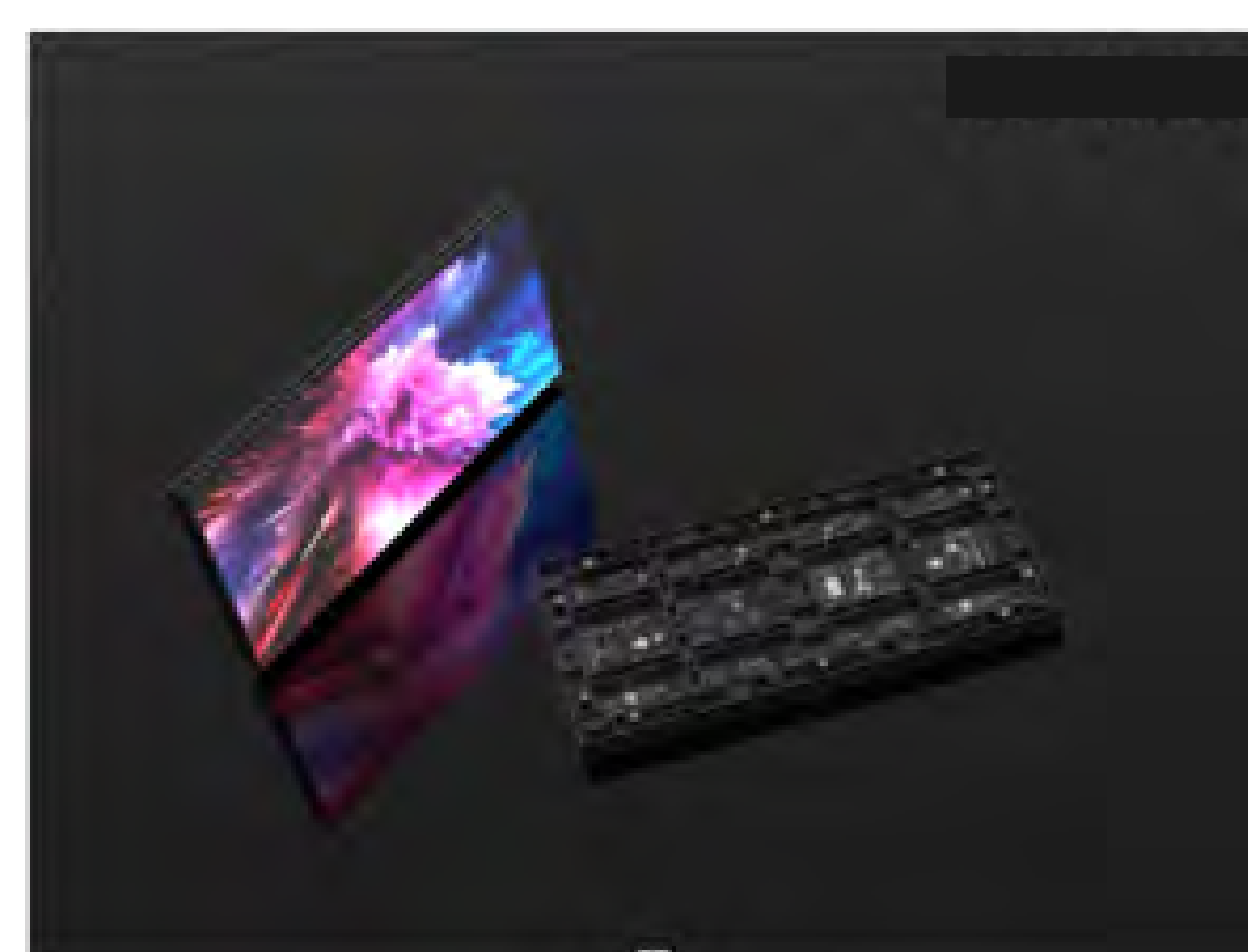
- Wider range of color reproduction
- Fast response time of G to G



3. Easy installation

- Block connector for quick and easy installation
- Customized enclosure manufacturing

INFORMATION



Retail signage

SIZE: 2,240 x 2,400(1.8 Pitch) mm



Auditorium

SIZE: 4,480 x 2,080(1.8 Pitch) mm



General Information

Model Name			ORLD-M2709	ORLD-M2712	ORLD-M2715	ORLD-M2718
LED Module	Plxel Pitch [mm]		0.93	1.25	1.56	1.87
	Resolution (H x V)		160 x 180	160 x 135	128 x 108	160 x 90
	Brightness [cd/m²]		200 ~ 700			
	Contrast Ratio		5,000 : 1			
	Refresh Rate [Hz]		1920 ~ 3840			
	Grey Scale [bit]		16			
	Viewing Angle (H / V) [°]		160 / 160			
	Size (H x V) [mm]		150.00 x 168.75	200.00 x 168.75		300.00 x 168.75
	Life Time [Hrs]		100,000			
LED Module	LED Module Quantity (H x V)		4 x 2	3 x 2		2 x 2
	Resolution (H x V)		640 x 360	480 x 270	384 x 216	320 x180
	Physical Density [Pixel/m²]		1,137,778	640,000	409,600	284,444
	Size (H x V X D) [mm]		600.0 x 337.5 x 80.0			
	Weight (kg)		7.5			
	Material		Die-Casting Aluminium			
	Power Supply		AC100-240V~, 50/60Hz			
	Power Consumption	Max. [W]	400	280	240	180
		Avg. [W]	300	210	180	150
Connectivity			Cable Free			

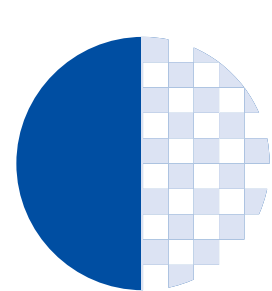


TOLED

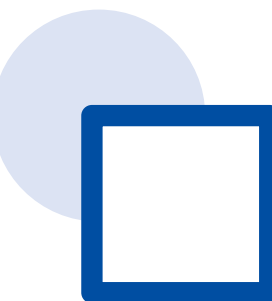
Orion Transparent OLED

Orion Transparent OLED Signage enlivens any virtual, contactless experience. Witness the power of OLED and touch technology as business opportunities unfold.

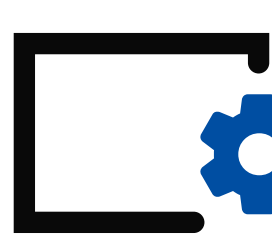
PRODUCT FEATURES



- 1. cutting edge technology**
- Most advanced solution in display industry
 - High rate of transmittance

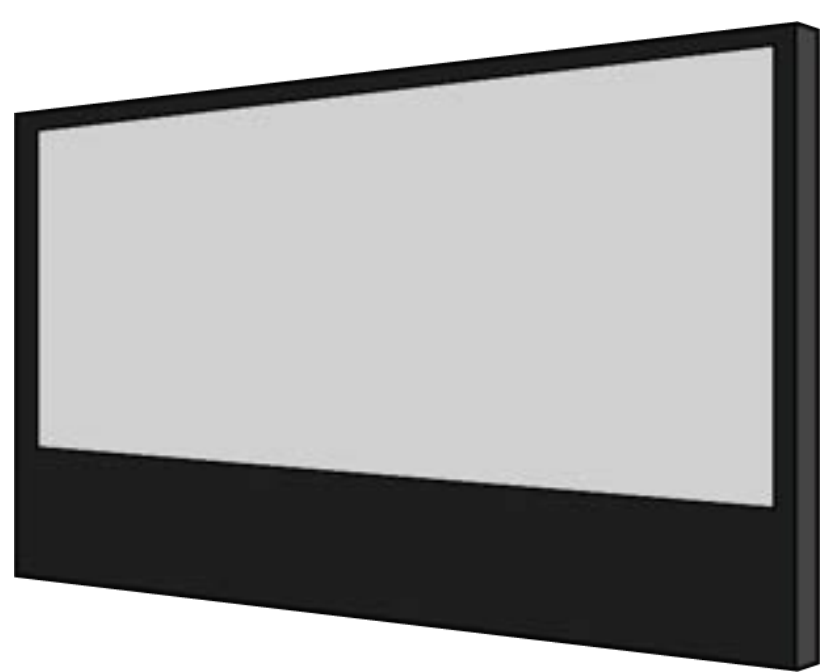


- 2. Excellent Design**
- Ideal for new business creation
 - Creative solution



- 3. highly customized production**
- Board solution can be customized
 - Video wall customize ready to offer

INFORMATION



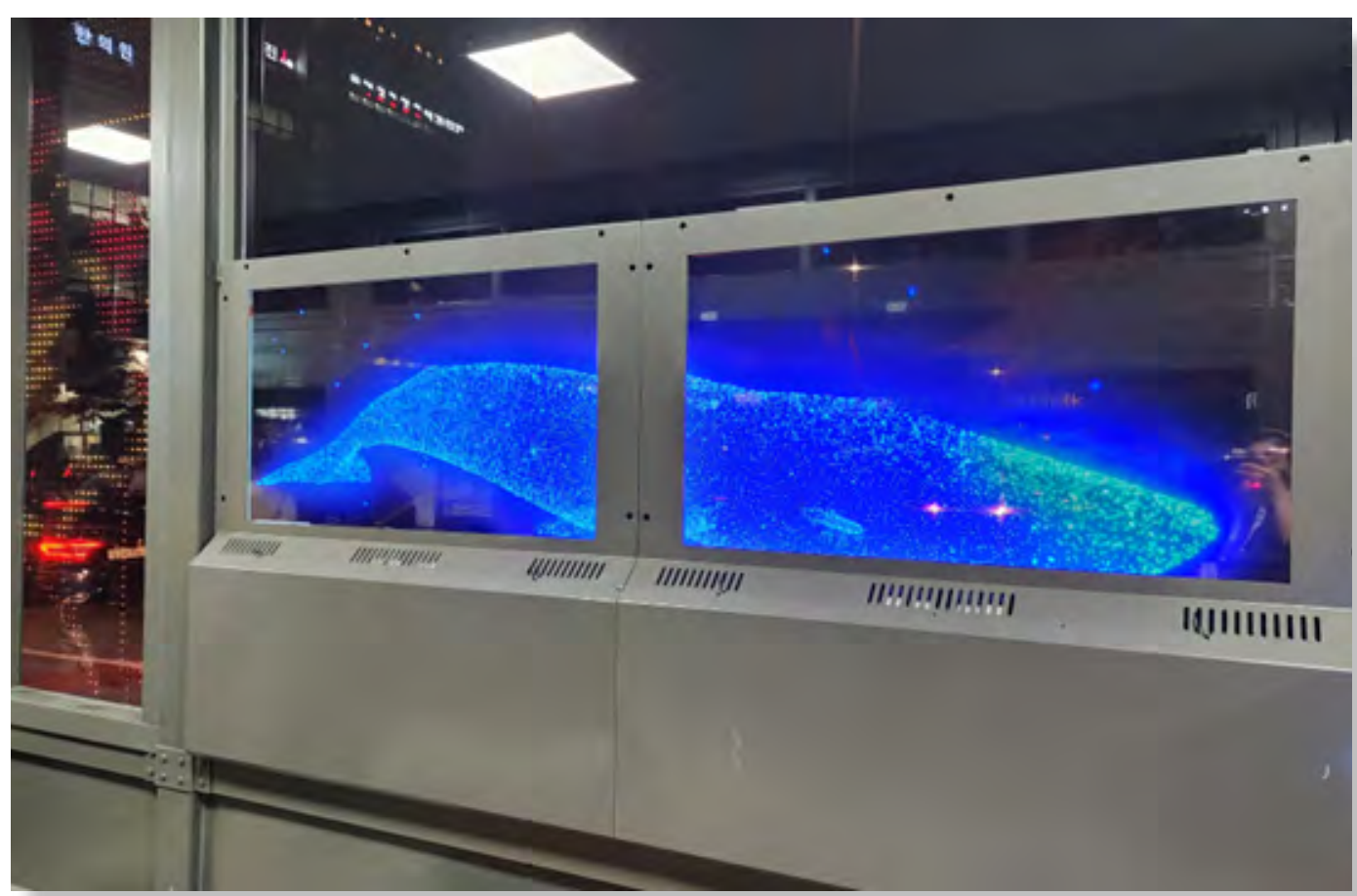
55” Transparent OLED



Panel / STB type



Set Top Box



Transportation **bus shelter**
SIZE | 55” T-OLED 2 x 1



Transportation **mobility**
SIZE | 55” T-OLED + Enclosure

Panel Specification

Item		55” Transparent OLED	Remark
Transparency		38 %	w/ARC
Luminance	Peak APL 25%	400 nit	
	Normal APL 100%	150 nit	
Refresh Rate		120 Hz	
Contrast Ratio		150,000 : 1	
Outline Dimension		1,221.5 x 699.4 x 1.6 mm	Panel Only
Acrive Area		1,209.6 x 680.4 mm	
Weight		3.1 kg	
Resolution		1920 x 1080	
Color Temperature		9,300 K	
Operating Temperature		0 ~ 45°C	
Cable Type		MCX Cable (3 meter)	

Product Specification

Screen size	55inch
Outline Dimensions (W) × (H)x(D)mm	1251.50 x 861.30 x 43.6
Display active area (W) × (H)mm	1210.2 x 681
Resolution	1920 x 1080, FHD
Luminance, White	400/150 cd/m² (Center 1point, Typ.)
Transparent Ratio	38% (typ.)
Inputs	HDMI x 1, DP x 2, USB2.0 x 1
Outputs	DP x 1, AUDIO x 1
PCAP	Interface USB + OCR Bonding
Surface treatment	Anti-Reflection treatment on a 5mm safety glass & Bonding
Control Box (W) × (H)x(D)mm	500 x 298.25 x 82
MICRO COAXIAL Cable	MICRO COAXIAL CABLE 3m
Panel Weight (kg)	22
Control Box (kg)	4
Case	Right, Left, Up (BEZEL-LESS) Down (Anodizing surface treatment for noise prevention)

나라장터 조달제품
PROCUREMENT PRODUCT





모델명	GLME-K5552
식별번호	23725965
가격	4328000

상품속성정보		
속성명	속성값	단위
화면소자	LCD(LED)	-
시야각	178/178	-
옵션/기타	리모컨/월 브라켓	-
원격조정기능유무	유	-
입력단자	DP(in/out),DVI,HDMI,LAN,IR,RS-232C(in/out)	-
해상도	1920x1080	pixel
화면크기	138.8	cm
베젤	1.8	mm
화면밝기	500	cd/m ²
제품크기(폭)	1211.4	mm
제품크기(깊이)	88.6	mm
제품크기(높이)	682.2	mm
네트워크연결기능유무	유	-
스피커기능유무	무	-
컴퓨터기능유무	무	-



모델명	GLMR-K5550
식별번호	23725963
가격	6418000

상품속성정보		
속성명	속성값	단위
화면소자	LCD(LED)	-
시야각	178/178	-
옵션/기타	리모컨/월 브라켓	-
원격조정기능유무	유	-
입력단자	DP(in/out),DVI,HDMI,LAN,IR,RS-232C(in/out)	-
해상도	1920x1080	pixel
화면크기	138.8	cm
베젤	0.88	mm
화면밝기	500	cd/m ²
제품크기(폭)	1210.5	mm
제품크기(깊이)	88.9	mm
제품크기(높이)	681.22	mm
네트워크연결기능유무	유	-
스피커기능유무	무	-
컴퓨터기능유무	무	-



모델명	GLMR-K5570
식별번호	23725962
가격	7463000

상품속성정보		
속성명	속성값	단위
화면소자	LCD(LED)	-
시야각	178/178	-
옵션/기타	리모컨/월 브라켓	-
원격조정기능유무	유	-
입력단자	DP(in/out),DVI,HDMI,LAN,IR,RS-232C(in/out)	-
해상도	1920x1080	pixel
화면크기	138.8	cm
베젤	0.88	mm
화면밝기	700	cd/m ²
제품크기(폭)	1210.5	mm
제품크기(깊이)	88.9	mm
제품크기(높이)	681.22	mm
네트워크연결기능유무	유	-
스피커기능유무	무	-
컴퓨터기능유무	무	-



Oriondisplay Co., Ltd.

www.oriondisplay.net

X

WE DISPLAY

Factory : 217, 1Gongdan-ro, Gumi-si, Gyeongsangbuk-do, 39370, Republic of Korea
Sales office : 1107, (Gasam W Center) 181, Gasan Digital 1-ro, Geumcheon-gu, Seoul 08503, Korea
Tel +82-2-6678-8523 Fax +82-2-6678-8560 E-mail contact@oriondisplay.net