



EM-IX(Q27D)

4MP 실화상 + 이중스펙트럼 열화상 듀얼센서 카메라

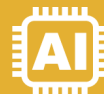
EMSTONE_D_AI Thermal Camera

비냉각식 VOx 열화상센서 적용 256(H)x192(V) @30fps
Deep Learning AI 지원 (IVS, 화재, 흡연, 통화감지 기능)
-20°C ~ 550°C 구간 온도 검출 가능
방수, 방진 인증 IP67 등급

Dual Streaming



4MP 실화상 + 이중
스펙트럼 열화상 듀
얼 센서 적용



IVS (Intelligent Video
Surveillance) 기능 기본
탐색 및 화재, 흡연감지

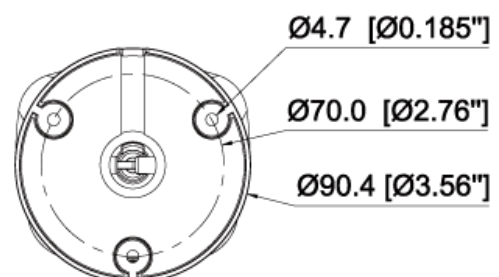
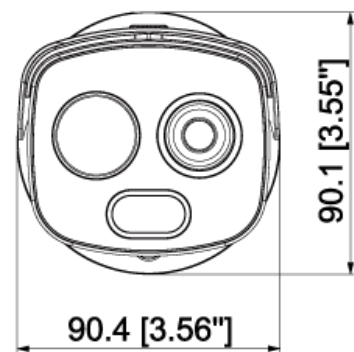
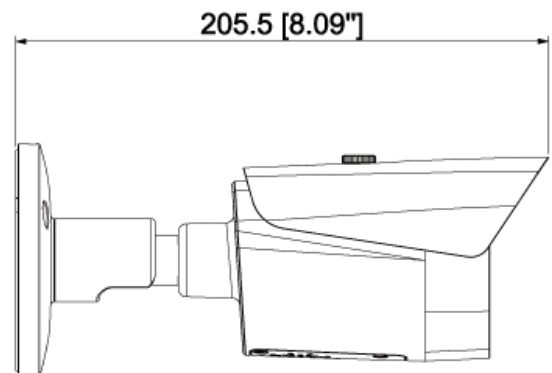
-20°C ~ 550°C
Target Temp.
Range

-20°C ~ 550°C
온도 검출 가능



방수, 방진 인증 IP67 등급
야외환경과 날씨변화에서도
최상의 성능 유지 가능

Dimensions



Specification

모델명	EM-IX(Q27D)
Thermal	Detector Type Vanadium Oxide Uncooled FPA
	Max. Resolution 256 x 192
	Spectral Range 8 μm ~ 14 μm
	Thermal Sensitivity < 50 mK (@f/1.0, 25 Hz, 300 K)
	Focal Length 3.5 mm
	Field of View H: 50.6°, V: 37.8
	Aperture F1.0
	Digital Zoom 16x
	Fusion Mode 3 (Warm color/Cool color/Ironred)
Visible	Image Sensor 1/2.7" 4Megapixel CMOS
	Max. Resolution 2336x1752
	Electronic Shutter Speed 1/30,000 s ~ 1 s
	Min. Illumination Color: 0.05 lux / Black & white: 0.005 lux / 0 lux (IR on)
	S/N Ratio ≥ 55 dB
	Illumination Distance ≥ 30 m (98.43 ft)
	Day/Night Auto (ICR); Color: B/W
	BLC / HLC Yes
	WDR DWDR
Intelligence	General Tripwire / Intrusion
	Advanced Fire Detection & Alarm / Cold & Hot Spot Trace / Human & Vehicle Classification / Smoking Detection / Call Detection
Temperature Measurement	Range Low Temperature Mode: -20°C to +150°C (-4°F to +302°F) High Temperature Mode: 0°C to +550°C (+32°F to +1022°F)
	Mode Spot: 12 / Line: 12 / Area: 12 / Support 12 rules simultaneously
Video	Video Compression H.265; H.264M; H.264H; H.264B; MJPEG
	Resolution (Thermal) Main Stream: 1280x960(1.3M)/XVGA(1024x768)/VGA(640x480)/256x192/1280x960 (by default) / Sub Stream: VGA(640x480)/256x192/256x192 (by default) (Visual) Main Stream: 2336x1752/1080p(1920x1080)/720p(1280x720)/D1(704x576)/2336x1752 (by default) / Sub Stream: 720p(1280x720)/D1(704x576)/CIF(352x288)/352x288 (by default)
	Frame Rate (Thermal) 50 Hz: (main stream) 25 fps (sub stream) 15 fps / 60 Hz: (main stream) 30 fps (sub stream) 15 fps (Visual) 50 Hz: (main stream) 25 fps (sub stream) 15 fps / 60 Hz: (main stream) 30 fps (sub stream) 15 fps
	Audio Compression G.711a; G.711mu; PCM
Network	Protocol HTTPS; HTTP; TCP; ARP; RTPSP; RTP; UDP; RTCP; SMTP; FTP; DHCP; DNS; DDNS; PPPoE; IPv4/v6; SNMP; QoS; UPnP; NTP
	Interoperability ONVIF; CGI
	User/Host 10
Power	Power Supply 12V DC/PoE
	Power Consumption Basic: < 8 W (LED off) / Max: < 14 W (LED on, heater on)
Environment	Operating Conditions -30°C to +50°C (-22°F to +122°F) / ≤ 95% RH
	Protection IP67
Structure	Dimensions 205.5 mm x 90.4 mm x 90.1 mm (8.09" x 3.56" x 3.55")
	Net Weight ≤ 0.9 kg (1.98 lb)

※ 본 제품은 품질향상을 위해 사전 예고없이 사양이 변경될 수 있습니다.