

HIGH SPEED VIDEO RECORD CAMERA

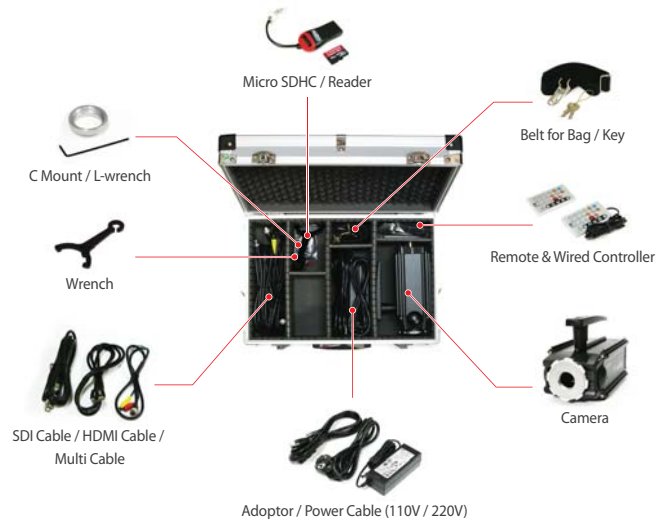
MACH-F340



→ KEY FEATURES

- High Spec & Low Cost
- 2/3" 2Megapixel CMOSIS CMOS Image Sensor
- Support High Speed Recording by Global Shutter of Sensor
- Exceptional High Number of fps (1920x1080p / 340fps)
- Versatile Resolution and Frame Change
- Fast Moving Object Capture with High Image Quality
- Live Display : 1920x1080p / 25~60fps
- Internal DDR3 8GB Memory
- SD Card Recording with H.264 Codec
- Micro SDHC (T-Flash) Support
(Max. 160times(4 hours) file recording per 32GB)
- Max. 8sec. Recording Time (Around 200MB)
- Save as AVI File
- Multiple Output : HDMI, HD-SDI, CVBS
- Support 59.94i for Broadcasting
- Transmit RAW Data Thru Host Link
(RAW Data : Original recording data from the sensor)
- Support GENLOCK Output Input
(Support synchronise and operate two different cameras)
- WDR (Wide Dynamic Range)
- C/CS Mount Lens (Basic lens : C Mount, 11.5~69.0mm, 2/3")
- OSD Control
- Including Remote and Wired Controller / 12V Adaptor

→ BASIC COMPONENTS



→ REAR



→ OPTIONAL ACCESSORIES



→ APPLICATIONS

R&D, Ballistic Test (Military), Educational Materials, Sports, Commercial, Traffic, Car Clash Test, Movie and Advertising, etc.



Reforming Golt Swing



Determination of the Sports



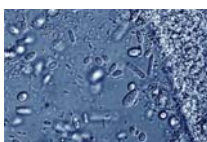
Analyzing Sport Game



Safety Test of Car Crash



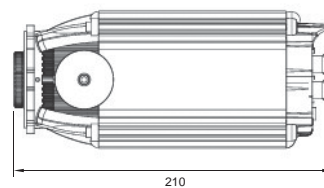
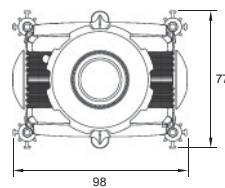
Quality Control of Factory



Microbial Laboratory

→ DIMENSIONS

Unit : mm



→ SPECIFICATIONS

MACH-F340

Image Sensor	2/3" 2Megapixel CMOSIS CMOS Image Sensor
Total Pixels	2048(H) x 1088(V) / 2,228,224 (pixels)
Effective Pixels	1920(H) x 1080(V) / 2,073,600 (pixels)
Scanning System	Progressive / External : GENLOCK
Sync System	Internal
Resolution	1920x1080p (25/29.97/30/50/59.94/60fps)
Live & Play Display Resolution	1920x1080p (25/29.97/30/50/59.94/60fps)
Video Output	HD-SDI, HDMI, CVBS (NTSC, PAL)
Min. Illumination	5.56V / Lux.s (with Micro Lenses @ 550nm)
Lens	C/CS Mount Lens Basic Lens : C Mount, 11.5~69.0mm, 2/3" (Option Item : Converter-ring for F Mount)
Iris	DC-Iris, Video Type
Exposure	Global Shutter
Dynamic Range	60dB
Recording Memory	Internal DDR3 8GB (Max. 2048x1088 : 340fps Appx. 8sec.)
External Memory	Micro SDHC (T-Flash) / Max. 32GB
Throughput / Speed	1920x1080p : 340fps / 1920x720p : 520fps / 1920x480p : 745fps / 1920x240p : 1430fps / 1920x120p : 2650fps
Recording Image Compression	H.264 Compression (Max. 1920x1080p : 30fps)
GENLOCK Support Format	1920x1080p (25/29.97/30/50/59.94/60fps) / 1080i, 720p Not Supported
External SYNC Input	Slave Mode : Tri-level Sync Input (1.0Vp-p, 75Ω)
External SYNC Output	Master Mode : Tri-level Sync Output (1.0Vp-p, 75Ω)
Display Output Port	1 HDMI, 1HD-SDI, 1 CVBS (Include Multi-cable)
Host I/F	Max. 12Gbps (3Gbps x 4Lane) Host I/F Channel
Serial Control Software	Yes
Continuous Recording	No (Upcoming : Yes)
Control I/F	Recording/Play trigger & OSD Button, External trigger I/F Support
I/O I/F	1 RS-232, 1 Triger In, 2 IR Remote Controller
Serial Port	RS-232
OSD	Yes
Power	DC +7~16V, 1520 (Option : DC +7~25V)
Power Consumption	DC 12V, 3A, 36W
Dimension	98(W) x 77(H) x 210(D)mm
Weight	1.4kg

• Design and specification are subject to change without notice.